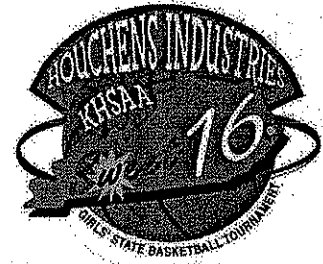


**2005**



**Houchens Industries/KHSAA  
Girls' Sweet 16®  
State Basketball Tournament**

**Final Game Stats  
Session 3 ~ Game 1  
Thursday, March 24**

**Newport Central Catholic Thoroughbreds  
vs.  
Paducah Tilghman Blue Tornado**



**March 23-26  
Diddle Arena  
Bowling Green**

# 2005 HOUCHENS INDUSTRIES/KHSAA GIRLS' SWEET 16 - Game Box Score

## Newport Central Catholic Thoroughbreds vs. Paducah Tilghman Blue Tornado

Date: 03/24/2005 Time: Noon CST Site: Diddle Arena-Bowling Green, KY Attendance: N

### Visitors: Paducah Tilghman Blue Tornado

##	Name	P	FG	3 Pt	FT	PTS	ORB	DRB	TR	PF	AST	TO	BS	ST	MIN
10	Ali Watson		2/8	0/4	0/3	4	3	3	6	1	1	3	0	1	23:35
21	Jarobia Hill		0/0	0/0	1/4	1	4	0	4	1	0	0	0	0	9:27
22	Cataria Sains														DNP
23	Whitley Flowers														DNP
24	* Christian Shelton		8/18	0/6	0/2	16	1	2	3	0	5	6	0	2	31:32
25	Allyson Rouse														DNP
33	* Dria Moore		1/2	0/0	0/0	2	0	0	0	3	2	2	0	2	20:38
35	* Aseer Iliavkase		6/12	0/0	2/5	14	4	3	7	4	1	4	0	5	32:00
44	* Jeriesha Hayes		2/5	0/2	0/1	4	1	2	3	0	1	2	0	0	13:07
50	Jamilla Petty														DNP
51	JeNisha Martin														DNP
52	Shakiyah Leonard		0/0	0/0	0/0	0	0	0	0	0	0	0	0	0	2:56
53	* Pam Bell		6/9	0/0	1/4	13	2	10	12	4	0	4	1	0	26:45
11	Anne Waldrop														DNP
40	Ashley Williams														DNP
<b>Team</b>							1	1	2			1			
<b>Totals</b>			25/54	0/12	4/19	54	16	21	37	13	10	22	1	10	160
<b>Total FG</b>			1st Half	12/29	41.4%	2nd Half	13/25	52.0%	Game	25/54	46.3%				
<b>3 PT FG</b>			1st Half	0/7	0.00%	2nd Half	0/5	0.00%	Game	0/12	0.00%				
<b>Free Throws</b>			1st Half	2/9	22.2%	2nd Half	2/10	20.0%	Game	4/19	21.1%				

### Home: Newport Central Catholic Thoroughbreds

##	Name	P	FG	3 Pt	FT	PTS	ORB	DRB	TR	PF	AST	TO	BS	ST	MIN
5	Christine Guidugli		1/1	0/0	0/0	2	0	0	0	4	0	1	0	0	14:16
11	* Shannon Klei		3/16	0/4	1/2	7	4	6	10	1	0	5	0	2	27:55
13	* Alex Litmer		3/8	0/4	0/0	6	0	1	1	2	3	1	0	2	25:11
15	Mallery Dunn		0/2	0/0	0/0	0	1	1	2	1	0	0	0	0	13:01
21	Mariah Cutter														DNP
22	Lacy Mile														DNP
23	* Whitney Cundiff		2/8	0/0	1/2	5	4	0	4	4	0	4	0	1	23:35
24	* Stacey Smith		3/9	0/0	0/0	6	6	5	11	2	1	4	0	0	27:00
32	Savannah Simms														DNP
33	* Jayme Thiem		9/17	4/8	4/5	26	1	6	7	4	4	8	1	5	29:02
<b>Team</b>							3	0	3			2			
<b>Totals</b>			21/61	4/16	6/9	52	19	19	38	18	8	25	1	10	160
<b>Total FG</b>			1st Half	9/29	31.0%	2nd Half	12/32	37.5%	Game	21/61	34.4%				
<b>3 PT FG</b>			1st Half	1/8	12.5%	2nd Half	3/8	37.5%	Game	4/16	25.0%				
<b>Free Throws</b>			1st Half	2/4	50.0%	2nd Half	4/5	80.0%	Game	6/9	66.7%				

Free Throw Pts	PT	NCC	3Pt Points	PT	NCC	Pts/Possession	PT	NCC
Pts off Turnovers	4	6	2nd Chance Points	0	12	Pts off Bench	0.78	0.74
Total Rebounds	25	19	Team Rebounds	15	15	Dead Ball Reb	5	2
Off Rebound %	37	38	Def Rebound %	2	3	Total Rebound %	6	6
Technical Fouls	45.7	47.5		52.5	54.3		49.3	50.7
Officials	PT	None						
	NCC	None						
	Ron Price, Samuel Smith, Shannon Feck							

	Qtr 1	Qtr 2	Qtr 3	Qtr 4	OT 1	OT 2	OT 3	OT 4	Total
<b>Paducah Tilghman Blue Tornado</b>	15	11	13	15	0	0	0	0	54
<b>Newport Central Catholic Thoroughbreds</b>	8	13	21	10	0	0	0	0	52

2005 HOUCHEMENS INDUSTRIES/KHSAA GIRLS' SWEET 16 - Play by Play Report - Period: 1 (pg 1)

Newport Central Catholic Thoroughbreds vs. Paducah Tilghman Blue Tornado

Date: 03/24/2005 Time: Noon CST Site: Diddle Arena-Bowling Green, KY Attendance: N

Name	Action	Action	Score	Clock	Diff	Name	Action	Action
11 S Klei	Start Game					24 C Shelton	Start Game	
13 A Litmer	Start Game					33 D Moore	Start Game	
23 W Cundiff	Start Game					35 A Itiavkase	Start Game	
24 S Smith	Start Game					44 J Hayes	Start Game	
33 J Thiem	Start Game					53 P Bell	Start Game	
W Cundiff	Jump Ball Loss			1 7:58		P Bell	Jump Ball Win	
				1 7:47		C Shelton	Turnover	(Bad Pass)
J Thiem	Steal			1 7:46				
S Klei	FG Attempt	S Smith Off Reb		1 7:37				
S Smith	Putback Att			1 7:36		J Hayes	Def Rebound	
			0-2	1 7:18	-2	P Bell	FG Made	J Hayes Assist
S Smith	Turnover	(Bad Pass)		1 7:10				
			0-4	1 7:01	-4	C Shelton	FG Made	D Moore Assist
A Litmer	3Pt Attempt	S Smith Off Reb		1 6:45				
S Smith	Turnover	(Traveling)		1 6:43				
				1 6:31		C Shelton	Turnover	
A Litmer	Steal			1 6:30				
S Klei	3Pt Attempt	S Smith Off Reb		1 6:26				
S Smith	Putback Att			1 6:24		P Bell	Def Rebound	
S Smith	Def Rebound			1 6:08		J Hayes	3Pt Attempt	
J Thiem	Layup Made		2-4	1 5:58	-2			
			2-6	1 5:36	-4	C Shelton	FG Made	
S Klei	FG Attempt	W Cundiff Off Reb		1 5:22				
W Cundiff	FG Attempt			1 5:17		P Bell	Def Rebound	
				1 5:07		D Moore	Turnover	(Bad Pass)
S Smith	FG Attempt			1 5:04		P Bell	Def Rebound	
				1 4:48		J Hayes	Turnover	(Fumble)
				1 4:48		A Watson	Enter Game	for J Hayes
W Cundiff	FG Attempt			1 4:35		P Bell	Def Rebound	
S Klei	Def Rebound			1 4:26		C Shelton	FG Attempt	
W Cundiff	Layup Att			1 4:17		P Bell	Block	A Watson Def Reb
				1 4:08		C Shelton	3Pt Attempt	A Watson Off Reb
W Cundiff	Personal Foul			1 4:00				
A Litmer	Leave Game			1 4:00				
C Guidugli	Enter Game	for W Cundiff		1 4:00				
M Dunn	Enter game			1 4:00				
				1 4:00		J Hayes	Enter Game	for P Bell
				1 4:00		C Shelton	FT Attempt	PT Deadball Reb
M Dunn	Def Rebound			1 4:00		C Shelton	FT Attempt	
S Klei	3Pt Attempt	M Dunn Off Reb		1 3:54				
				1 3:52		A Watson	Personal Foul	
				1 3:52		S Leonard	Enter Game	for C Shelton
W Cundiff	Enter Game	for S Smith		1 3:52				
W Cundiff	Turnover			1 3:38				
NCC	Turnover			1 3:37		A Itiavkase	Steal	
C Guidugli	Personal Foul			1 3:36				
				1 3:36		A Itiavkase	FT Attempt	PT Deadball Reb
J Thiem	Turnover		2-7	1 3:36	-5	A Itiavkase	FT Made	
				1 3:25				
				1 3:24		A Watson	Steal	
			2-9	1 3:24	-7	A Watson	Layup Made	
A Litmer	Enter Game	for S Klei		1 3:24				
				1 3:24		C Shelton	Enter Game	for D Moore
				1 3:24		A Watson	FT Attempt	A Itiavkase Off Reb
				1 3:22		A Itiavkase	Putback Att	A Itiavkase Off Reb
			2-11	1 3:20	-9	A Itiavkase	Putback Made	
J Thiem	3Pt Made	A Litmer Assist	5-11	1 3:03	-6			
				1 2:34		A Watson	Turnover	(Bad Pass)
W Cundiff	Steal			1 2:33				
J Thiem	FG Attempt			1 2:28		PT	Def Rebound	(Dead Ball Reb)
J Thiem	Personal Foul			1 2:26				

**2005 HOUCHEM INDUSTRIES/KHSAA GIRLS' SWEET 16 - Play by Play Report - Period: 1 (pg 2)**  
**Newport Central Catholic Thoroughbreds vs. Paducah Tilghman Blue Tornado**  
**Date: 03/24/2005 Time: Noon CST Site: Diddle Arena-Bowling Green, KY Attendance: N**

Name	Action	Action	Score	Clock	Diff	Name	Action	Action
S Klei	Enter Game	for A Litmer		1 2:26				
	Official Time Out			1 2:26			Official Time Out	
				1 2:26		P Bell	Enter Game	for S Leonard
S Klei	Def Rebound			1 2:09		C Shelton	3Pt Attempt	A Watson Off Reb
S Klei	Turnover			1 2:04		A Watson	3Pt Attempt	
				1 2:00				
			5-13	1 1:58		A Iliavkase	Steal	
C Guidugli	FG Made		7-13	1 1:57 -8		C Shelton	Layup Made	A Iliavkase Assist
				1 1:39 -6				
				1 1:26		J Hayes	FG Attempt	J Hayes Off Reb
			7-15	1 1:25 -8		J Hayes	Putback Made	
C Guidugli	Personal Foul			1 1:25				
S Smith	Enter Game	for M Dunn		1 1:25				
S Smith	Def Rebound			1 1:25		J Hayes	FT Attempt	
W Cundiff	FT Made		8-15	1 1:02 -7		P Bell	Personal Foul	
W Cundiff	FT Attempt			1 1:02		J Hayes	Def Rebound	
NCC	Def Rebound	(Dead Ball Reb)		1 0:41		P Bell	FG Attempt	
				1 0:41		P Bell	Personal Foul	
				1 0:41		S Leonard	Enter Game	for P Bell
W Cundiff	Turnover	(Traveling)		1 0:34				
				1 0:20		A Watson	FG Attempt	A Watson Off Reb
M Dunn	Enter Game	for W Cundiff		1 0:14				
S Klei	Def Rebound			1 0:05		A Watson	3Pt Attempt	

**End of Period Summary Thoroughbreds 8 Blue Tornado 15**

**Largest Lead: Thoroughbreds 2 Blue Tornado 11 (9 pts)**  
**Lead in Period: Thoroughbreds 2 Blue Tornado 11 (9 pts)**  
 7 for 9 oppo pts  
 5 for 0 pts  
 3/15 for 20.0 %  
 1/2 for 50.0 %

Turnovers  
 2nd Chances  
 Field Goals  
 Free Throws

**Lead Changes: 0 Ties: 0**  
**Lead Changes: 0 Ties: 0 (this period)**  
 5 for 0 oppo pts  
 6 for 4 pts  
 7/17 for 41.2 %  
 1/6 for 16.7 %

**2005 HOUCHEMS INDUSTIRES/KHSAA GIRLS' SWEET 16 - Play by Play Report - Period: 2 (pg 1)**  
**Newport Central Catholic Thoroughbreds vs. Paducah Tilghman Blue Tornado**  
**Date: 03/24/2005 Time: Noon CST Site: Diddle Arena-Bowling Green, KY Attendance: N**

Name	Action	Action	Score	Clock	Diff	Name	Action	Action
A Litmer	Enter Game	for C Guidugli		2 8:00				
J Thiem	3Pt Attempt	NCC Off Reb		2 7:50				
				2 7:49		D Moore	Enter Game	for S Leonard
J Thiem	FG Made	S Smith Assist	10-15	2 7:33	-5	D Moore	Turnover	
S Klei	Steal			2 7:17				
S Klei	Turnover	(Double Dribble)		2 7:16				
J Thiem	Def Rebound			2 7:16		A Watson	3Pt Attempt	
J Thiem	Turnover	(Bad Pass)		2 7:16		A Itiavkase	Steal	
				2 7:16		A Itiavkase	Turnover	(Traveling)
S Smith	Personal Foul			2 6:52				
				2 6:41		A Itiavkase	Turnover	(Traveling)
S Smith	Turnover	(Traveling)		2 6:34		S Leonard	Enter Game	for A Watson
				2 6:34		C Shelton	Turnover	(Traveling)
				2 6:14				
S Klei	FG Attempt	S Smith Off Reb		2 6:02				
S Smith	Putback Made		12-15	2 5:59	-3			
				2 5:56		PT	Partial Time Out	
				2 5:56		P Bell	Enter Game	for S Leonard
W Cundiff	Enter Game	for M Dunn		2 5:56				
NCC	Def Rebound	(Dead Ball Reb)		2 5:44		P Bell	FG Attempt	
A Litmer	3Pt Attempt	S Smith Off Reb		2 5:26				
A Litmer	FG Made		14-15	2 5:19	-1			
A Litmer	Personal Foul			2 4:59				
				2 4:59		P Bell	FT Attempt	PT Deadball Reb
S Smith	Def Rebound			2 4:59		P Bell	FT Attempt	
J Thiem	3Pt Attempt	W Cundiff Off Reb		2 4:47				
W Cundiff	Turnover	(Traveling)		2 4:44				
				2 4:18		C Shelton	Turnover	(Traveling)
				2 4:18		A Watson	Enter Game	for J Hayes
A Litmer	FG Made	J Thiem Assist	16-15	2 4:10	+1 (L1)			
S Klei	Def Rebound			2 3:58		C Shelton	3Pt Attempt	
W Cundiff	Layup Made	J Thiem Assist	18-15	2 3:49	+3			
				2 3:42		PT	Partial Time Out	
				2 3:23		A Itiavkase	FG Attempt	A Itiavkase Off Reb
			18-17	2 3:20	+1	A Itiavkase	Putback Made	
S Smith	FG Attempt			2 3:10		A Watson	Def Rebound	
J Thiem	Def Rebound			2 2:48		C Shelton	FG Attempt	
	Official Time Out			2 2:47			Official Time Out	
C Guidugli	Enter Game	for A Litmer		2 2:47				
J Thiem	Turnover	(Fumble)		2 2:36				
				2 2:11		A Itiavkase	FG Attempt	A Itiavkase Off Reb
			18-19	2 2:09	-1 (L2)	A Itiavkase	Putback Made	
S Smith	Turnover			2 1:49				
				2 1:49		A Itiavkase	Steal	
			18-21	2 1:37	-3	P Bell	FG Made	C Shelton Assist
				2 1:27		A Itiavkase	Personal Foul	
J Thiem	FT Attempt	NCC Deadball Reb		2 1:27				
J Thiem	FT Made			2 1:27				
A Litmer	Enter Game	for J Thiem		2 1:27				
				2 1:09		D Moore	FG Made	A Watson Assist
				2 1:02		D Moore	Personal Foul	
W Cundiff	FG Attempt	W Cundiff Off Reb		2 0:55				
W Cundiff	FG Made		21-23	2 0:48	-2			
				2 0:27		P Bell	FG Attempt	P Bell Off Reb
				2 0:27		P Bell	Putback Made	
S Smith	Personal Foul		21-25	2 0:27	-4	P Bell	FT Made	
M Dunn	Enter Game	for S Smith	21-26	2 0:27	-5			
				2 0:27		J Hayes	Enter Game	for P Bell
				2 0:23		D Moore	Personal Foul	
W Cundiff	FG Attempt	NCC Off Reb		2 0:19				

**2005 HOUCHEMS INDUSTIRES/KHSAA GIRLS' SWEET 16 - Play by Play Report - Period: 2 (pg 2)**  
**Newport Central Catholic Thoroughbreds vs. Paducah Tilghman Blue Tornado**  
**Date: 03/24/2005 Time: Noon CST Site: Diddle Arena-Bowling Green, KY Attendance: N**

Name	Action	Action	Score	Clock	Diff	Name	Action	Action
S Klei	3Pt Attempt			2 0:05		PT	Def Rebound	

**End of Period Summary Thoroughbreds 21 Blue Tornado 26**

**Largest Lead: Thoroughbreds 2 Blue Tornado 11 (9 pts)**  
**Lead in Period: Thoroughbreds 8 Blue Tornado 15 (7 pts)**  
 6 for 4 oppo pts  
 6 for 6 pts  
 6/14 for 42.9 %  
 1/2 for 50.0 %

Turnovers  
 2nd Chances  
 Field Goals  
 Free Throws

**Lead Changes: 2 Ties: 0**  
**Lead Changes: 1 Ties: 0 (this period)**  
 4 for 4 oppo pts  
 3 for 7 pts  
 5/12 for 41.7 %  
 1/3 for 33.3 %



2005 HOUCHENS INDUSTIRES/KHSAA GIRLS' SWEET 16 - Play by Play Report - Period: 3 (pg 1)

Newport Central Catholic Thoroughbreds vs. Paducah Tilghman Blue Tornado

Date: 03/24/2005 Time: Noon CST Site: Diddle Arena-Bowling Green, KY Attendance: N

Name	Action	Action	Score	Clock	Diff	Name	Action	Action
				3 8:00		A Watson	Leave Game	
				3 8:00		C Shelton	Leave Game	
				3 8:00		D Moore	Leave Game	
				3 8:00		A Itiavkase	Leave Game	
				3 8:00		J Hayes	Leave Game	
C Guidugli	Leave Game			3 8:00				
S Klei	Leave Game			3 8:00				
A Litmer	Leave Game			3 8:00				
M Dunn	Leave Game			3 8:00				
S Klei	Enter Game	for W Cundiff		3 8:00				
A Litmer	Enter game			3 8:00				
W Cundiff	Enter game			3 8:00				
S Smith	Enter game			3 8:00				
J Thiem	Enter game			3 8:00				
				3 8:00		C Shelton	Enter game	
				3 8:00		D Moore	Enter game	
				3 8:00		A Itiavkase	Enter game	
				3 8:00		J Hayes	Enter game	
				3 8:00		P Bell	Enter game	
				3 7:46		D Moore	Personal Foul	
				3 7:46		A Watson	Enter Game	for D Moore
				3 7:46		D Moore	Enter Game	for A Watson
				3 7:46		A Watson	Enter Game	for D Moore
J Thiem	FT Made		22-26	3 7:46	-4			
J Thiem	FT Made		23-26	3 7:46	-3			
				3 7:25		P Bell	Turnover	(Traveling)
A Litmer	FG Attempt	S Klei Off Reb		3 7:15				
S Klei	Putback Made		25-26	3 7:13	-1			
			25-28	3 6:56	-3	J Hayes	FG Made	C Shelton Assist
A Litmer	Turnover	(Traveling)		3 6:43				
			25-30	3 6:43		J Hill	Enter Game	for J Hayes
				3 6:28	-5	P Bell	FG Made	C Shelton Assist
J Thiem	FG Attempt			3 6:11		A Watson	Def Rebound	
J Thiem	Def Rebound			3 6:04		A Watson	Layup Att	
A Litmer	Layup Made	J Thiem Assist	27-30	3 5:58	-3			
				3 5:42		C Shelton	FG Attempt	P Bell Off Reb
			27-32	3 5:40	-5	P Bell	Putback Made	
J Thiem	Layup Made		29-32	3 5:21	-3			
W Cundiff	Personal Foul			3 5:06				
M Dunn	Enter Game	for W Cundiff		3 5:06				
			29-33	3 5:06	-4	J Hayes	Enter Game	for P Bell
				3 5:06		J Hill	FT Made	
				3 5:06		J Hill	FT Attempt	J Hill Off Reb
M Dunn	Personal Foul			3 5:04				
				3 4:55		J Hayes	3Pt Attempt	J Hill Off Reb
J Thiem	Block	J Thiem Def Reb		3 4:51		A Itiavkase	FG Attempt	
J Thiem	3Pt Attempt			3 4:45		C Shelton	Def Rebound	
A Litmer	Personal Foul			3 4:43				
				3 4:37		J Hayes	Turnover	(Traveling)
				3 4:37		P Bell	Enter Game	for J Hayes
				3 4:31		A Itiavkase	Personal Foul	
S Klei	Layup Made	J Thiem Assist	31-33	3 4:20	-2			
				3 4:08		A Watson	3Pt Attempt	PT Off Reb
C Guidugli	Enter Game	for A Litmer		3 4:06				
				3 4:04		PT	Turnover	(5 Sec Violation)
S Smith	FG Attempt	S Smith Off Reb		3 3:50				
S Smith	Putback Made		33-33	3 3:47	(T1)			
			33-35	3 3:25	-2	C Shelton	FG Made	
S Klei	FG Attempt			3 3:12		P Bell	Def Rebound	
				3 3:09		P Bell	Turnover	(Bad Pass)
J Thiem	Steal			3 3:08				



**2005 HOUCHEMS INDUSTIRES/KHSAA GIRLS' SWEET 16 - Play by Play Report - Period: 3 (pg 2)**  
**Newport Central Catholic Thoroughbreds vs. Paducah Tilghman Blue Tornado**  
**Date: 03/24/2005 Time: Noon CST Site: Diddle Arena-Bowling Green, KY Attendance: N**

Name	Action	Action	Score	Clock	Diff	Name	Action	Action
J Thiem	3Pt Made		36-35	3 3:05	+1 (L3)			
				3 2:39		P Bell	Turnover	(Bad Pass)
J Thiem	Steal			3 2:39				
C Guidugli	Turnover	(3 Sec Violation)		3 2:31				
A Litmer	Enter Game	for S Klei		3 2:30				
	Official Time Out			3 2:30			Official Time Out	
W Cundiff	Enter Game	for S Smith		3 2:30				
				3 2:24		D Moore	Enter Game	for A Watson
				3 2:07		A Itiavkase	Turnover	(Traveling)
A Litmer	3Pt Attempt	J Thiem Off Reb		3 2:07				
J Thiem	FG Attempt	W Cundiff Off Reb		3 2:00				
J Thiem	3Pt Made	A Litmer Assist	39-35	3 1:54	+4			
			39-37	3 1:39	+2	C Shelton	FG Made	D Moore Assist
J Thiem	Layup Made		41-37	3 1:18	+4			
				3 1:17		P Bell	Personal Foul	
				3 1:17		A Watson	Enter Game	for D Moore
J Thiem	FT Made		42-37	3 1:17	+5			
				3 1:11		A Itiavkase	Turnover	(Bad Pass)
J Thiem	Steal			3 1:11				
M Dunn	FG Attempt			3 1:01		A Itiavkase	Def Rebound	
J Thiem	Personal Foul			3 1:00				
S Klei	Enter Game	for J Thiem		3 1:00				
				3 0:49		C Shelton	FG Attempt	J Hill Off Reb
W Cundiff	Personal Foul			3 0:48				
S Smith	Enter Game	for W Cundiff		3 0:48				
				3 0:48		J Hill	FT Attempt	PT Deadball Reb
A Litmer	Def Rebound			3 0:48		J Hill	FT Attempt	
S Smith	FG Attempt	S Klei Off Reb		3 0:23				
S Klei	Turnover			3 0:20				
				3 0:19		A Itiavkase	Steal	
			42-39	3 0:16	+3	C Shelton	Layup Made	
S Klei	FG Attempt			3 0:03		P Bell	Def Rebound	

**End of Period Summary Thoroughbreds 42 Blue Tornado 39**

**Largest Lead: Thoroughbreds 2 Blue Tornado 11 (9 pts)**  
**Lead in Period: Thoroughbreds 21 Blue Tornado 26 (5 pts)**

**3 for 4 oppo pts**  
**5 for 7 pts**  
**8/18 for 44.4 %**  
**3/3 for 100 %**

**Turnovers**  
**2nd Chances**  
**Field Goals**  
**Free Throws**

**Lead Changes: 3 Ties: 1**  
**Lead Changes: 1 Ties: 1 (this period)**  
**7 for 10 oppo pts**  
**5 for 2 pts**  
**6/12 for 50.0 %**  
**1/4 for 25.0 %**

2005 HOUCHEMENS INDUSTRIES/KHSAA GIRLS' SWEET 16 - Play by Play Report - Period: 4 (pg 1)

Newport Central Catholic Thoroughbreds vs. Paducah Tilghman Blue Tornado

Date: 03/24/2005 Time: Noon CST Site: Diddle Arena-Bowling Green, KY Attendance: N

Name	Action	Action	Score	Clock	Diff	Name	Action	Action
J Thiem	Enter Game	for C Guidugli		4 8:00				
				4 7:47		A Watson	Turnover	(Bad Pass)
S Klei	Steal			4 7:46				
J Thiem	3Pt Made		45-39	4 7:41	+6			
				4 7:20		C Shelton	3Pt Attempt	J Hill Off Reb
NCC	Def Rebound	(Dead Ball Reb)		4 7:09		C Shelton	3Pt Attempt	
				4 7:08		J Hill	Personal Foul	
M Dunn	FG Attempt	S Klei Off Reb		4 6:57				
S Klei	Putback Att			4 6:54		P Bell	Def Rebound	
				4 6:46		A Itiavkase	Offensive Foul	
				4 6:46		A Itiavkase	Turnover	
S Klei	Charge Taken			4 6:46				
W Cundiff	Enter Game	for M Dunn		4 6:46				
				4 6:46		PT	Time Out	
				4 6:46		D Moore	Enter Game	for A Watson
S Klei	Turnover			4 6:41				
				4 6:40		C Shelton	Steal	
			45-41	4 6:39	+4	A Itiavkase	FG Made	C Shelton Assist
S Klei	Personal Foul			4 6:39				
J Thiem	FG Made		47-41	4 6:32	+6			
				4 6:19		C Shelton	Turnover	(Bad Pass)
A Litmer	Steal			4 6:13				
S Klei	FG Attempt			4 6:09		P Bell	Def Rebound	
				4 6:07		P Bell	Turnover	(Bad Pass)
J Thiem	Steal			4 6:06				
J Thiem	3Pt Attempt	S Klei Off Reb		4 6:03				
S Klei	Putback Made		49-41	4 6:00	+8			
W Cundiff	Personal Foul			4 5:49				
C Guidugli	Enter Game	for S Klei		4 5:49				
M Dunn	Enter Game	for W Cundiff		4 5:49				
S Smith	Def Rebound			4 5:49		P Bell	FT Attempt	
J Thiem	Turnover	(Bad Pass)		4 5:42				
J Thiem	Def Rebound			4 5:22		C Shelton	3Pt Attempt	
NCC	Partial Time Out			4 5:16				
				4 5:16		A Watson	Enter Game	for J Hill
S Klei	Enter Game	for A Litmer		4 5:16				
NCC	Turnover	(10 Sec Violation)		4 5:05				
J Thiem	Personal Foul			4 4:59				
A Litmer	Enter Game	for J Thiem		4 4:59				
NCC	Def Rebound	(Dead Ball Reb)		4 4:59		A Itiavkase	FT Attempt	
				4 4:58		A Itiavkase	Personal Foul	
S Klei	3Pt Attempt		49-43	4 4:48	+6	P Bell	Def Rebound	
				4 4:40		A Watson	Layup Made	
S Klei	Layup Att			4 4:29		A Itiavkase	Def Rebound	
C Guidugli	Personal Foul			4 4:28				
J Thiem	Enter Game	for S Klei		4 4:28				
C Guidugli	Leave Game			4 4:28				
S Klei	Enter Game	for M Dunn		4 4:28				
W Cundiff	Enter game			4 4:28				
			49-44	4 4:28	+5	A Itiavkase	FT Made	
S Klei	Def Rebound			4 4:28		A Itiavkase	FT Attempt	
W Cundiff	FG Attempt			4 4:13		A Itiavkase	Def Rebound	
				4 4:03		C Shelton	Turnover	(Bad Pass)
S Klei	FG Attempt			4 3:40		P Bell	Def Rebound	
			49-46	4 3:33	+3	C Shelton	Layup Made	
NCC	Time Out			4 3:27				
J Thiem	Turnover	(Bad Pass)		4 3:25				
				4 3:24		D Moore	Steal	
J Thiem	Def Rebound			4 3:23		A Itiavkase	FG Attempt	
W Cundiff	Turnover	(Traveling)		4 3:15				
			49-48	4 3:05	+1	A Itiavkase	Layup Made	

**2005 HOUCHENS INDUSTIRES/KHSAA GIRLS' SWEET 16 - Play by Play Report - Period: 4 (pg 2)**  
**Newport Central Catholic Thoroughbreds vs. Paducah Tilghman Blue Tornado**  
**Date: 03/24/2005 Time: Noon CST Site: Diddle Arena-Bowling Green, KY Attendance: N**

Name	Action	Action	Score	Clock	Diff	Name	Action	Action
				4 3:00				
A Litmer	3Pt Attempt			4 2:44		C Shelton	Def Rebound	
S Klei	Def Rebound			4 2:34		D Moore	FG Attempt	
				4 2:21		P Bell	Personal Foul	
	Official Time Out			4 2:21			Official Time Out	
S Klei	FT Attempt	NCC Deadball Reb		4 2:21				
S Klei	FT Made		50-48	4 2:21	+2			
C Guidugli	Enter Game	for S Klei		4 2:21				
			50-50	4 2:13	(T2)	A Itiavkase	FG Made	
J Thiem	Turnover			4 1:54				
				4 1:54		C Shelton	Steal	
				4 1:48		A Itiavkase	FG Attempt	C Shelton Off Reb
			50-52	4 1:46	-2 (L4)	C Shelton	Putback Made	
S Smith	FG Made	A Litmer Assist	52-52	4 1:20	(T3)			
NCC	Partial Time Out			4 1:17				
S Klei	Enter Game	for A Litmer		4 1:17				
J Thiem	FG Attempt	NCC Deadball Reb		4 1:07				
J Thiem	Turnover	(Traveling)		4 1:07				
			52-54	4 0:56	-2	P Bell	FG Made	C Shelton Assist
S Klei	Turnover	(Bad Pass)		4 0:48				
				4 0:48		PT	Time Out	
A Litmer	Enter Game	for S Smith		4 0:30		A Watson	Turnover	(Fumble)
				4 0:30				
NCC	Time Out			4 0:30				
S Smith	Enter Game	for C Guidugli		4 0:30				
J Thiem	Turnover	(Bad Pass)		4 0:11				
				4 0:11		D Moore	Steal	
C Guidugli	Enter Game	for S Smith		4 0:07				
C Guidugli	Personal Foul			4 0:07				
NCC	Time Out			4 0:07		A Watson	FT Attempt	PT Deadball Reb
				4 0:07		A Watson	FT Attempt	
S Smith	Enter Game	for A Litmer		4 0:05				
S Smith	Def Rebound			4 0:04				

**End of Period Summary Thoroughbreds 52 Blue Tornado 54**

**Largest Lead: Thoroughbreds 2 Blue Tornado 11 (9 pts)**

**Lead in Period: Thoroughbreds 49 Blue Tornado 41 (8 pts)**

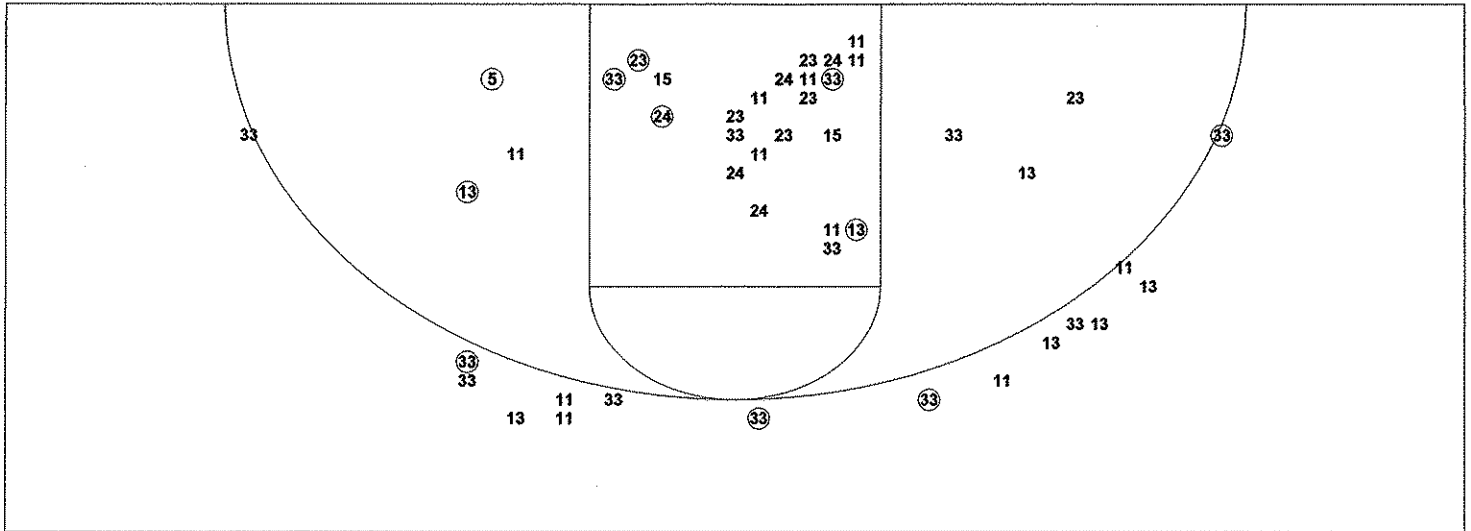
9 for 8 oppo pts  
 3 for 2 pts  
 4/14 for 28.6 %  
 1/2 for 50.0 %

Turnovers  
 2nd Chances  
 Field Goals  
 Free Throws

**Lead Changes: 4 Ties: 3**  
**Lead Changes: 1 Ties: 2 (this period)**

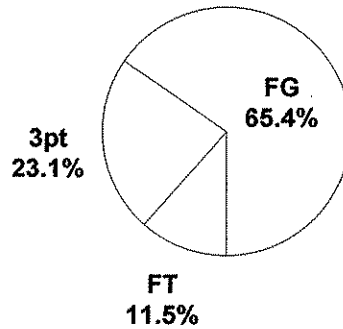
6 for 5 oppo pts  
 2 for 2 pts  
 7/13 for 53.8 %  
 1/6 for 16.7 %

005 HOUCHENS INDUSTRIES/KHSAA GIRLS' SWEET 16 - TEAM SHOT CHART for the Newport Central Catholic Thoroughbred  
 Newport Central Catholic Thoroughbreds vs. Paducah Tilghman Blue Tornado  
 DATE: 03/24/2005 TIME: Noon CST SITE: Diddle Arena-Bowling Green, KY

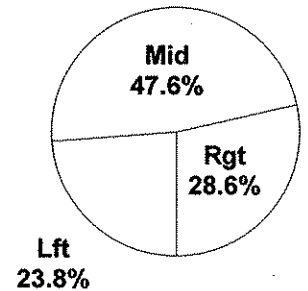


Shot Summary	MIA	%	PTS
3Pt FG	4/16	25.0%	12
2Pt FG	17/45	37.8%	34
Layups - L	2/3	66.7%	4
Layups - R	4/5	80.0%	8
Dunks	0/0	0.0%	0
Putbacks	4/7	57.1%	8
Overall Shooting	21/61	34.4%	46
Free Throws	6/9	66.7%	6
Total Points			52

Scoring Distribution

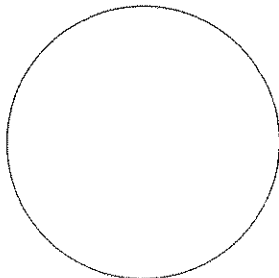


Scoring Locations

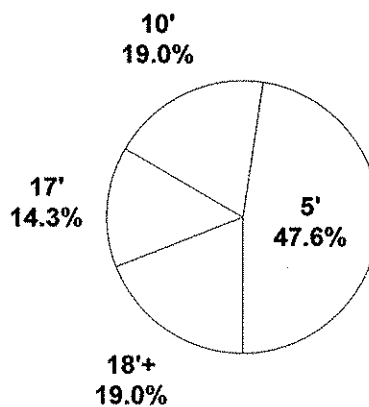


By Period	FG	FGA	FG%	3Pt	3PA	3P%	FT	FTA	FT%	PTS	ORB	DRB	TR	PF	AST	TO	BS	ST	P/S
1st Period	3	15	20.0	1	4	25.0	1	2	50.0	8	5	6	11	5	1	7	0	3	0.50
2nd Period	6	14	42.9	0	4	0.00	1	2	50.0	13	6	4	10	3	3	6	0	1	0.87
3rd Period	8	18	44.4	2	4	50.0	3	3	100	21	5	3	8	5	3	3	1	3	1.11
4th Period	4	14	28.6	1	4	25.0	1	2	50.0	10	3	6	9	5	1	9	0	3	0.67
Game	21	61	34.4	4	16	25.0	6	9	66.7	52	19	19	38	18	8	25	1	10	0.80

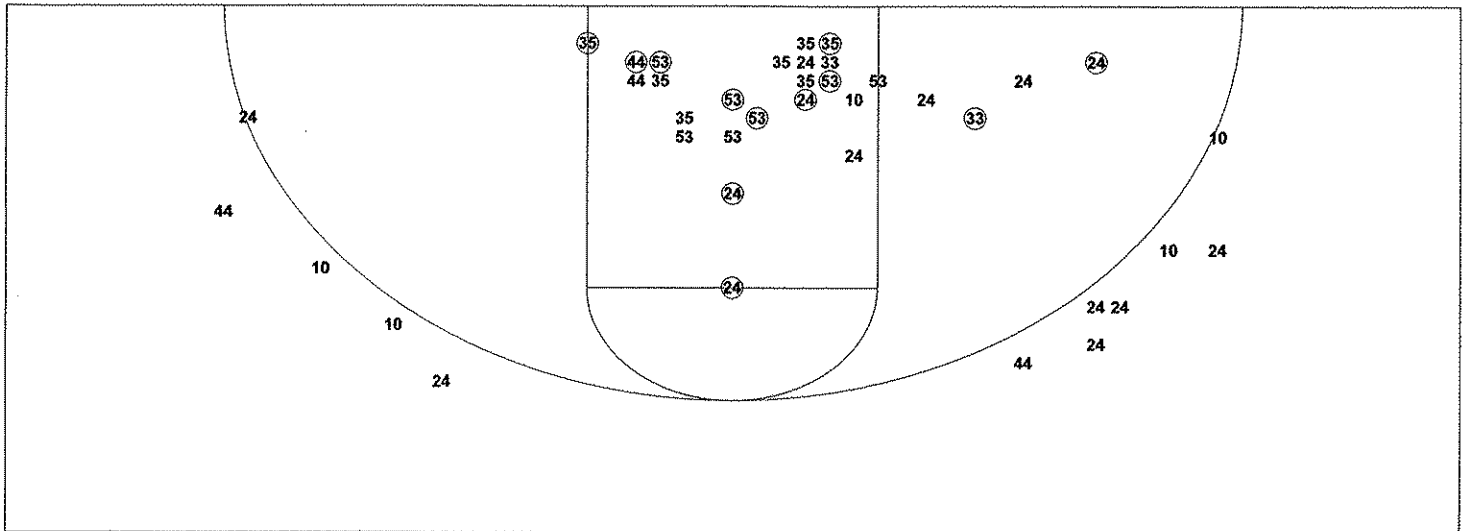
Scoring Breakdown



Scoring Range

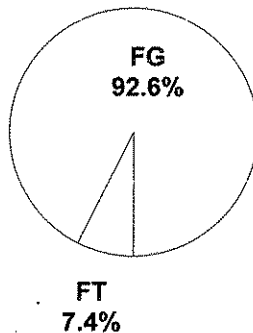


2005 HOUCHENS INDUSTIRES/KHSAA GIRLS' SWEET 16 - TEAM SHOT CHART for the Paducah Tilghman Blue Tornado  
 Newport Central Catholic Thoroughbreds vs. Paducah Tilghman Blue Tornado  
 DATE: 03/24/2005 TIME: Noon CST SITE: Diddle Arena-Bowling Green, KY

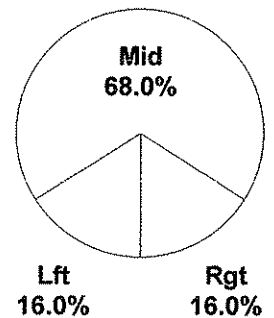


Shot Summary	M/A	%	PTS
3Pt FG	0/12	0.0%	0
2Pt FG	25/42	59.5%	50
Layups - L	4/4	100.0%	8
Layups - R	2/3	66.7%	4
Dunks	0/0	0.0%	0
Putbacks	7/8	87.5%	14
Overall Shooting	25/54	46.3%	50
Free Throws	4/19	21.1%	4
Total Points			54

Scoring Distribution

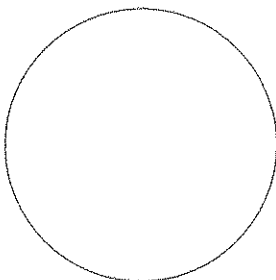


Scoring Locations



By Period	FG	FGA	FG%	3Pt	3PA	3P%	FT	FTA	FT%	PTS	ORB	DRB	TR	PF	AST	TO	BS	ST	P/S
1st Period	7	17	41.2	0	5	0.00	1	6	16.7	15	6	7	13	3	3	5	1	3	0.75
2nd Period	5	12	41.7	0	2	0.00	1	3	33.3	11	3	2	5	3	2	4	0	2	0.85
3rd Period	6	12	50.0	0	2	0.00	1	4	25.0	13	5	5	10	3	3	7	0	1	0.93
4th Period	7	13	53.8	0	3	0.00	1	6	16.7	15	2	7	9	4	2	6	0	4	0.94
Game	25	54	46.3	0	12	0.00	4	19	21.1	54	16	21	37	13	10	22	1	10	0.86

Scoring Breakdown



Scoring Range

